



1235 SOUTHBROOKE DR., SHIPSEWANA, IN



2 bedrooms, 2 bathrooms, 2 cars

MODEL HOME FEATURES

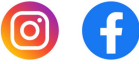
- Zero clearance entry
- Andersen windows
- Therma-tru fiberglass front door
- 9ft Ceilings on the 1st Floor
- Walk-in pantry
- Finished Rec. room in the basement
- Vinyl Shakes with stone accent exterior
- Maintenance free lawn, landscaping, and snow removal
- Large Covered front porch
- Rough-in plumbing in the basement

HOME PRICE:	\$ 363,025.00
LOT 25 PRICE:	\$ 39,000.00
LANDSCAPE & IRRIGATION:	\$ 12,200.00
TOTAL HOME PRICE:	\$ 414,225.00
HOA MAINTANCE FEE:	\$166.00/MONTH



DESIGN AND QUALITY - A TRADITION

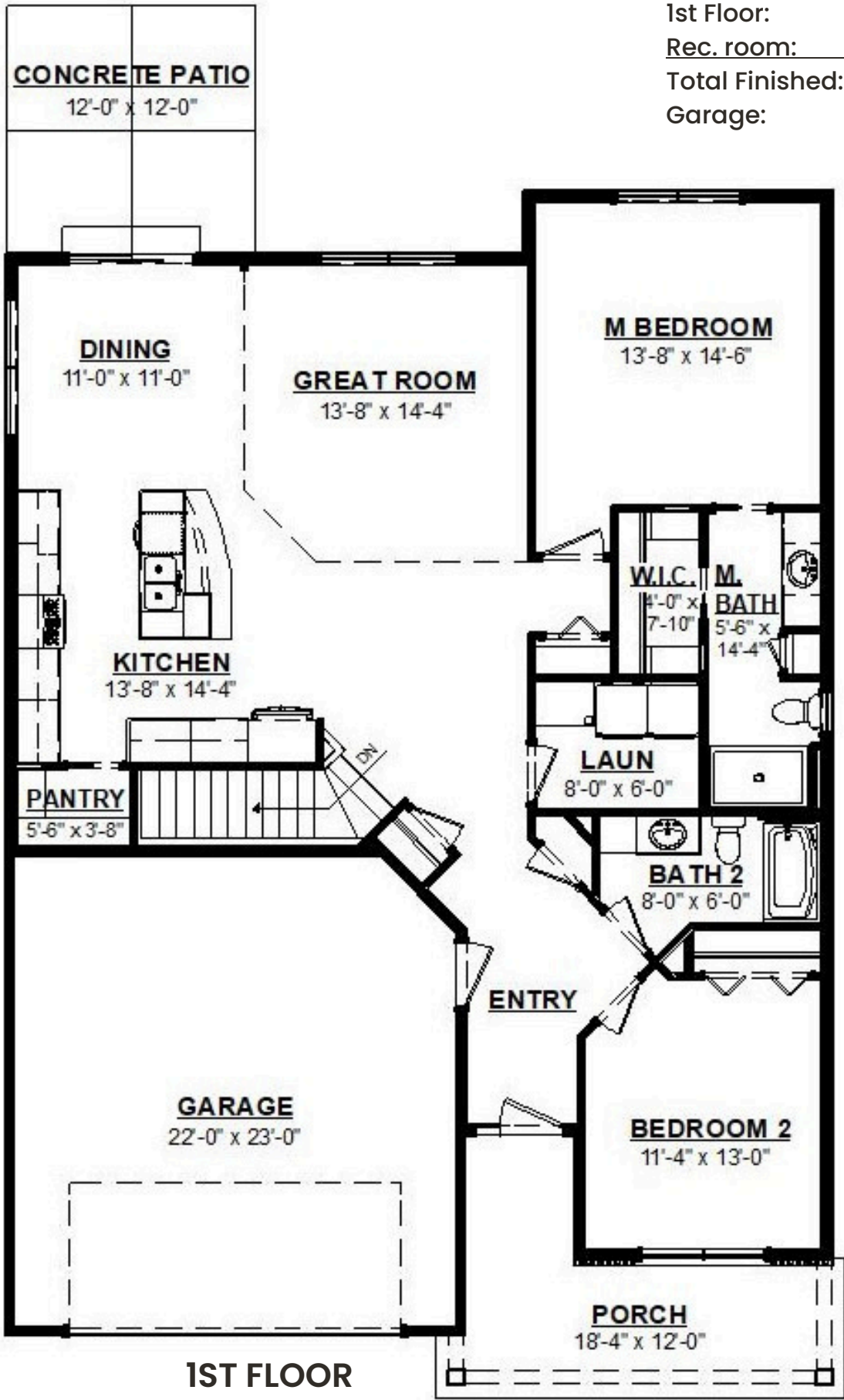
CONTACT US



SCHROCKHOMES.COM

574-534-2706

2523 MESSICK DRIVE | GOSHEN, IN



1st Floor: 1,520 sq.ft
 Rec. room: 444 sq.ft.
 Total Finished: 1,964 sq.ft.
 Garage: 495 sq.ft.



1ST FLOOR